

STYLE

Where art and science converge



▲ THE TWILIGHT ZONE

Corolla and pappus of *Craspedia robusta* var. *pedicellata* (Kirk) Allan (Gnaphalieae) from Stewart Island, New Zealand. The unusual growths emerging from the corolla tube appear to be perianth elements that are part pappus and part corolla. Perhaps a mis-timing of action of floral homeotic genes has led to some inner pappus elements fusing to the lower corolla tube and developing corolla-like expanded papillate apices. We'd welcome other interpretations or observations of similar structures. Scale bar: 1 mm

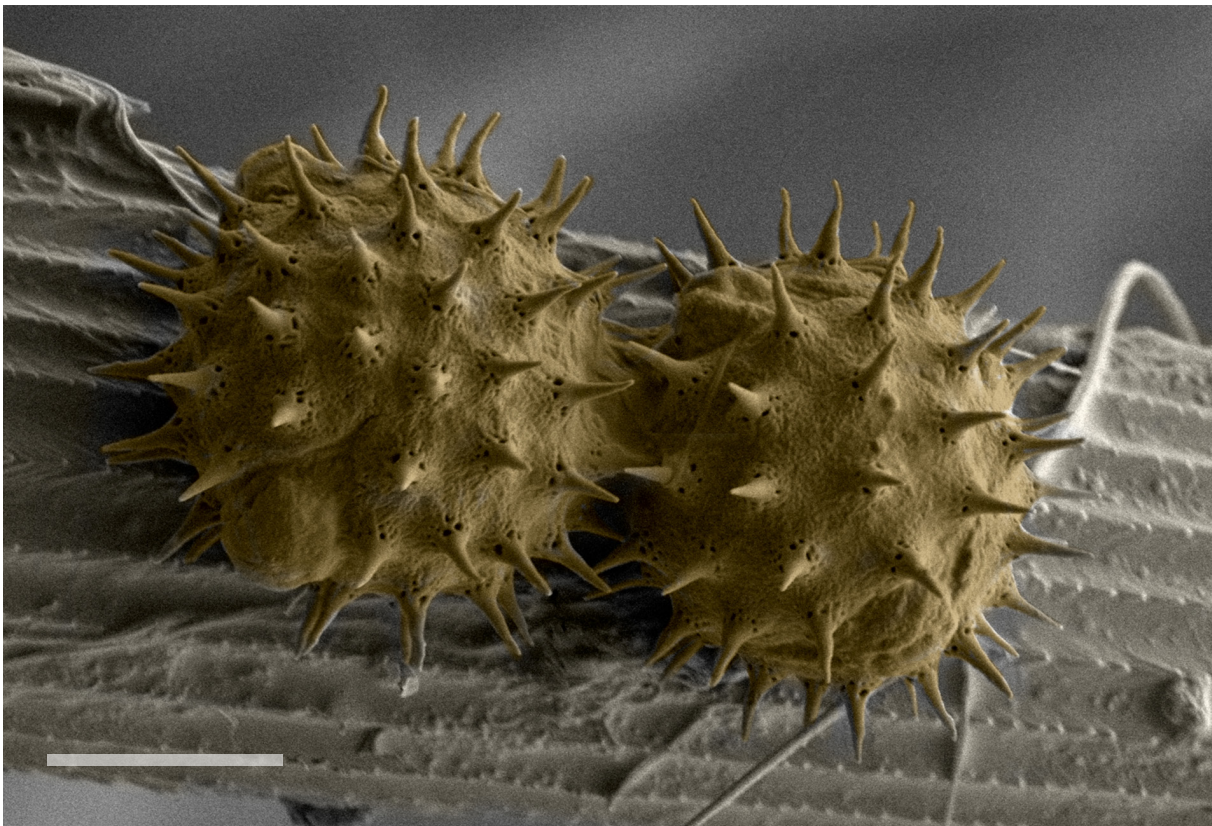
Phil Garnock-Jones

HYALOSERIS ►

From a distance *Hyaloseris rubicunda* Griseb. looks like a dead bush, but as you get closer you can admire its delicate, deep red capitula. I saw this species in Salta (northwestern Argentina) during a fieldtrip with Luis Palazzesi and Iralys Ventosa.

Oriane Hidalgo





VOYAGERS

These are Asteraceae pollen grains covering the leg of a Nymphalid butterfly from the collections at the University of Nevada, Reno, Museum of Natural History. I am interested in understanding the interactions between plant and pollinator, pollinators' responses to past and future climate change, and how pollination webs are changing in response to anthropogenic disturbances.
Scale bar: 10 μm

Behnaz Balmaki



LAND OF GIANTS

Archidasyphyllum diacanthoides (Less.) Ferreira, Saavedra & Groppo (Barnadesioideae) a relatively tall tree (up to 20 m) that grows in very humid regions along the Andean range in Patagonia (Chile and Argentina), where virtually no other daisies are found. This was the first time I saw so many capitula at the canopy level.

Jaume Pellicer